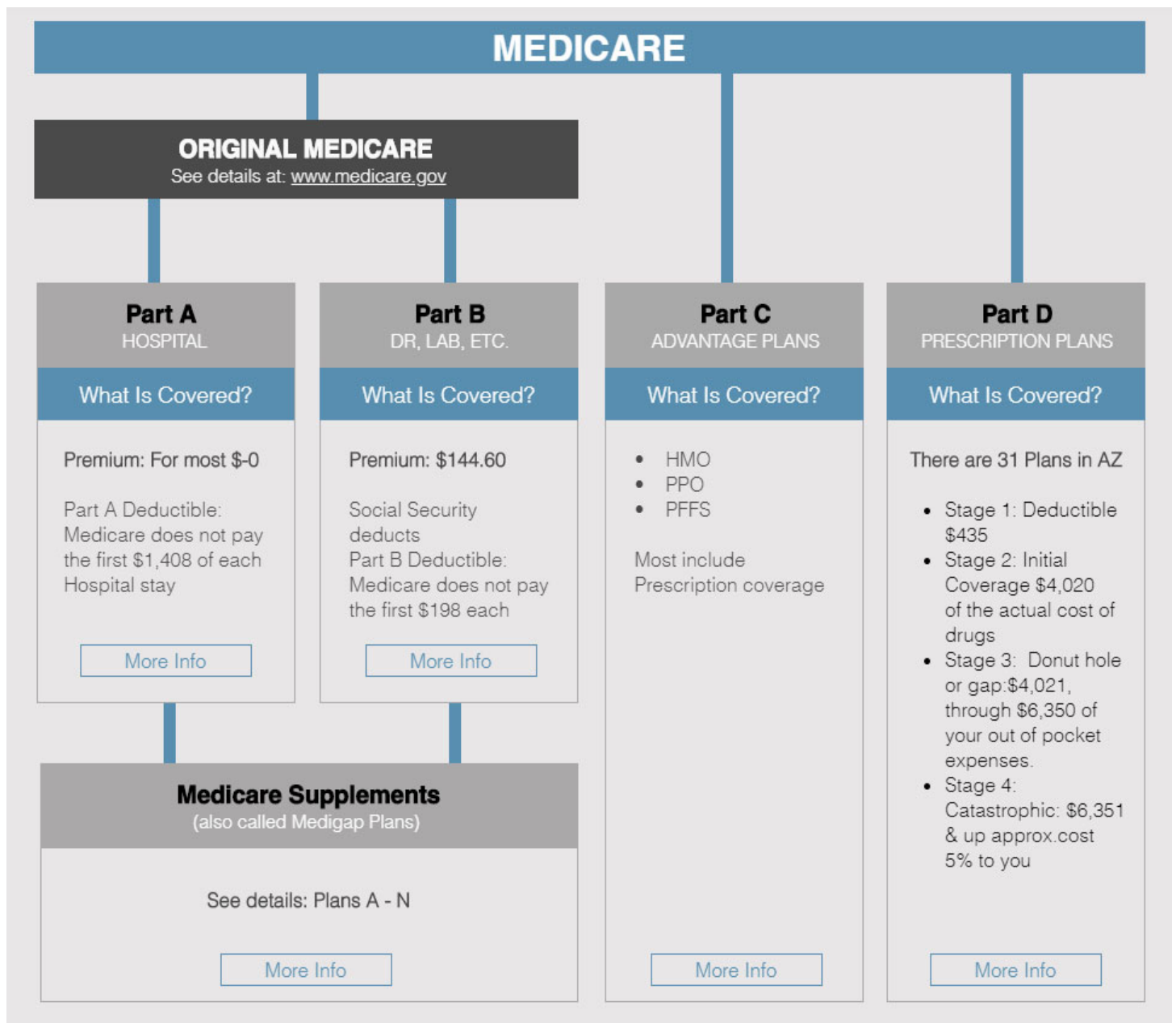


Tom Russell & Associates Inc.

What is Basic Medicare?

Medicare is a Federal Health Insurance program that covers most people 65 years old and over, some people younger than 65 with disabilities, people diagnosed with amyotrophic lateral sclerosis (ALS), and those with end-stage renal disease (ESRD).

Medicare is divided into several parts. Here is a brief overview of these parts:



For all general inquiries call to set an appointment today!

928-474-1233 (In Town) 1.800.745.3577 TTY:711 or visit www.tomrussellinsurance.com